



AROUND THE UK

In Yorkshire –
we completed a detailed Flood Risk Assessment for RIBA chartered architects, Smith and Roper. The project was construction of a new church hall at St John the Baptist Church in Sheffield.

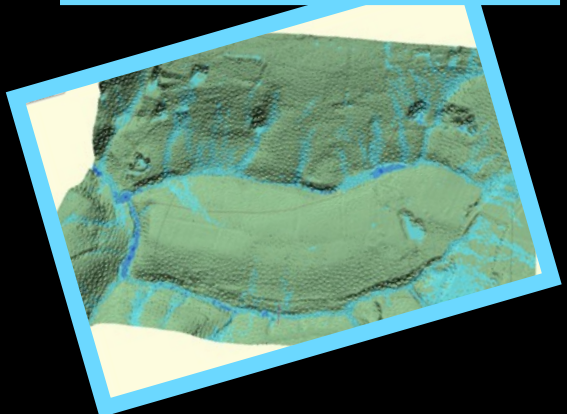
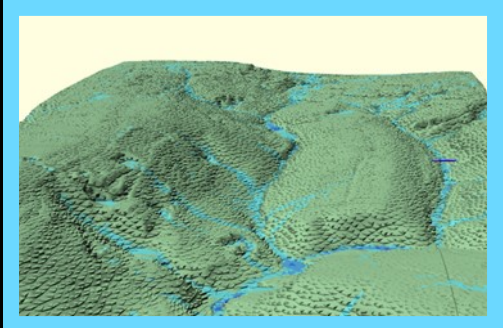


In Derbyshire -
we delivered a detailed Flood Risk Assessment for a private landowner in support of a full planning application for a site located in Flood Zone 3.



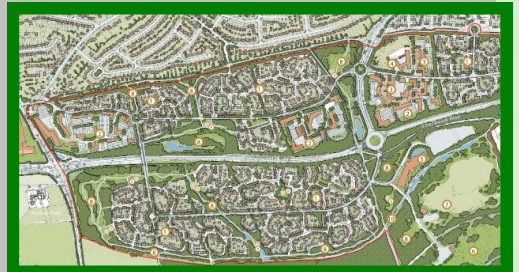
CUTTING EDGE FLOOD RISK ASSESSMENT

We have just launched our new 3D overland flood route computer modelling service, as a free added value bonus to our standard flood risk assessments package for development sites in England and Wales. Using the world leading InfoWorks ICM software and LiDAR data from the Environment Agency we create a 3D virtual ground model of your site and the surrounding area. We then run a computer simulation of extreme rainfall over the 3D surface to accurately assess the risk from overland flood routing. MD John Ward commented "Infoworks ICM is expensive software, out of reach of most flood risk assessment consultants. We do a lot of flood modelling work for Water Companies where this software is standard, so it's an easy add-on service for us, that gives us an edge in the Flood Risk market".



COLLABORATION BENEFITS

We were engaged by Severn Trent Water Ltd to assess the impact of a large proposed development in Mansfield. The development comprises 23 hectares of new employment sites and around 1700 homes. We identified opportunities for mutual benefits for both the developer and the water company in terms of drainage network performance and capital investment timing.



LARGE SCALE DEVELOPMENT IMPACT

We were commissioned by international civil engineering consultancy, Mott MacDonald, to deliver a program of Growth Study reports for Southern Water. These are high level impact assessments for proposed large scale housing developments in Brighton, Newhaven, Hastings, Southampton and Worthing. The reports will feed in to the strategic planning process for the water company and will speed up the response time to individual planning application consultations.



AROUND THE UK

In Kent –
we delivered a high level Flood Risk Assessment for a private landowner in support of an outline planning application for a greenfield development of 1,500 dwellings, community facilities and infrastructure.



COMPLEX MADE SIMPLE

We have been commissioned by international engineering enterprise, Laing O'Rourke, to develop a comprehensive drainage strategy for one of their largest factory sites. The site has multiple issues relating to drainage and water management. We have completed the first stage scoping study and are now building a 3D computer model of the drainage networks and ground surface. Modeller Theresa Finucane said "using the model we can quickly test multiple solution options against the design criteria. This is a complex, dynamic system and modelling was the most cost effective way to go for the client".



In London –
we produced a detailed Flood Risk Assessment for international consultancy and construction company, Mace. The project was redevelopment of a street of 90 properties in Tottenham.

